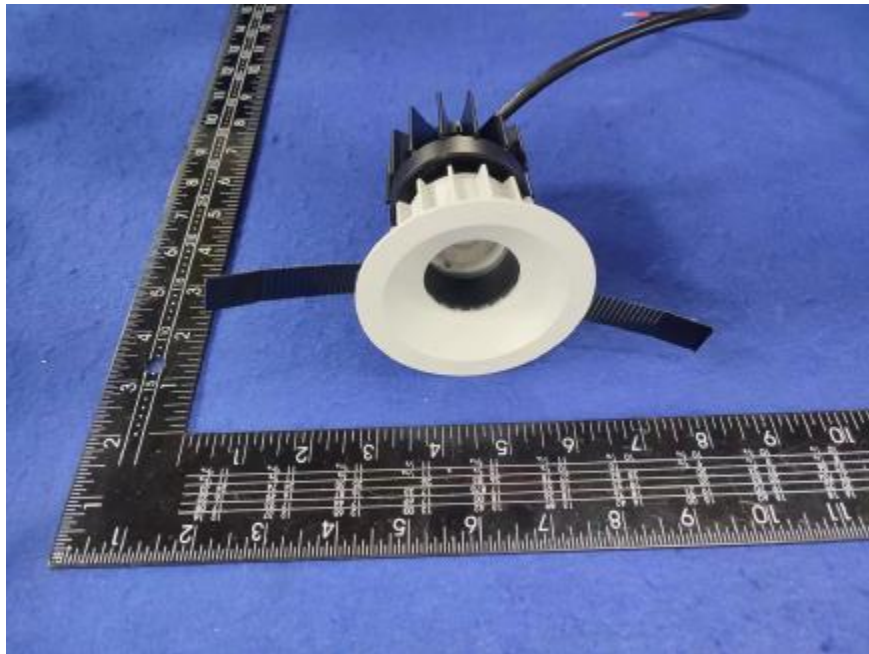


Luminaire Photograph



Light Output Ratio:	62.2%	
Luminaire Power:	10.16 W	
SHR Nominal:	0.00	Calculated using the TM5
SHR Maximum:	0.30	fine grid method.

C Range: 0 - 360DEG
C Interval: 30.0DEG
Test Speed: HIGH
Temperature: 25.3 °C
Operators: zoe
Test Date: 2024-5-21

Range: 0 - 180DEG
Interval: 1.0DEG
Test System: EVERFINE GO-SPEX500_V1 SYSTEM V2.00.461
Humidity: 65.0%
Test Distance: 3.160m [K=1.0000]
Remarks: LAMP: BXRE-30G10TH-A-83 Ra:90
LENS: PM-1082-WH 15R
NO DRIVER: 300mA
30minutes warm-up

LUMINOUS INTENSITY DISTRIBUTION DIAGRAM

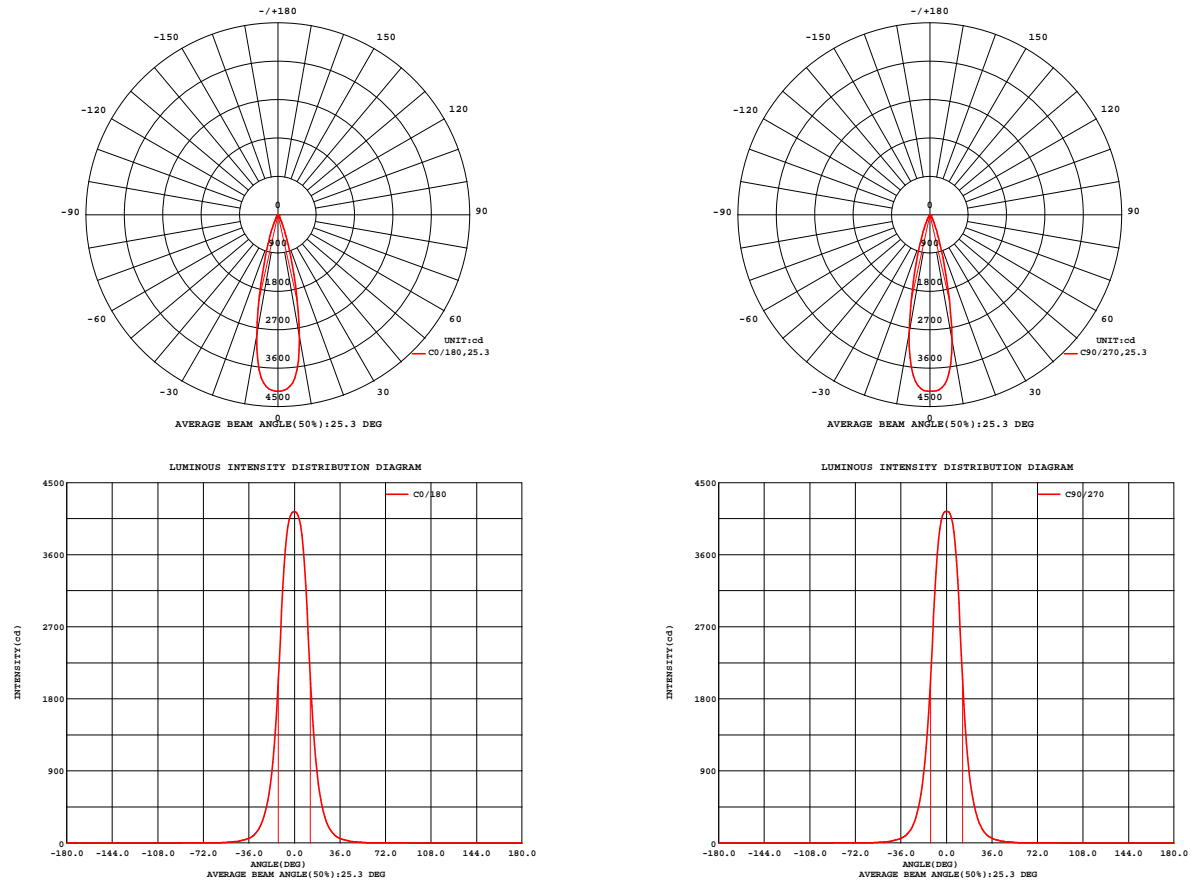


Fig. C0/C180

Fig. C90/C270

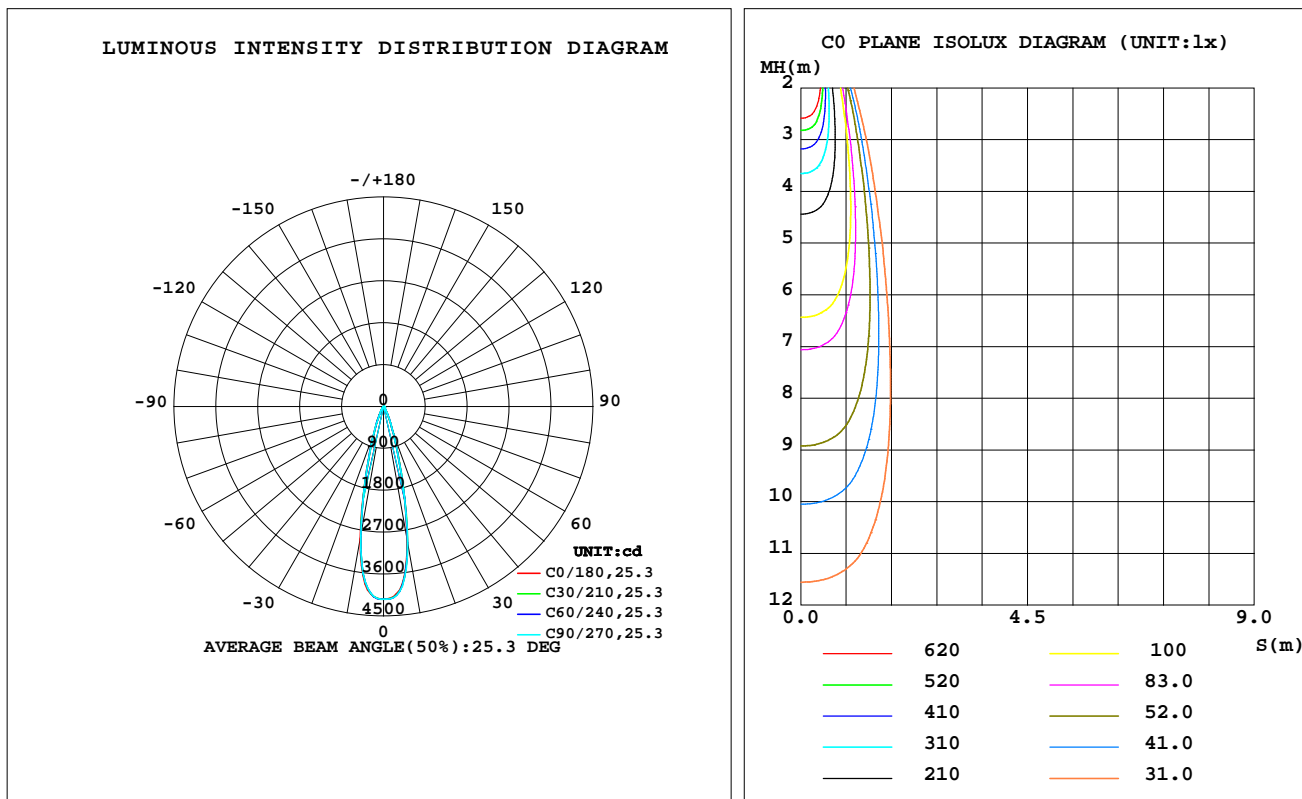
C Range: 0 - 360DEG
C Interval: 30.0DEG
Test Speed: HIGH
Temperature: 25.3 °C
Operators: zoe
Test Date: 2024-5-21

Range: 0 - 180DEG
Interval: 1.0DEG
Test System: EVERFINE GO-SPEX500_V1 SYSTEM V2.00.461
Humidity: 65.0%
Test Distance: 3.160m [K=1.0000]
Remarks: LAMP: BXRE-30G10TH-A-83 Ra: 90
LENS: PM-1082-WH 15R
NO DRIVER: 300mA
30minutes warm-up

LUMINAIRE PHOTOMETRIC TEST REPORT

Test:U:33.852V I:0.3000A P:10.156W PF:1.0000 Freq:0Hz Lamp Flux:1537.95x1 lm		
NAME: 2318.127-ACOT-70-HE	TYPE:	WEIGHT:
SPEC.: 3000K	DIM.:	SERIAL No.: 2405210566
MFR.: RISE	SUR.: 0.00362984m2	Shielding Angle:

DATA OF LAMP		PHOTOMETRIC DATA Eff: 94.24 lm/W			
MODEL	Brideglux	Imax(cd)	4139	S/MH(C0/180)	0.41
NOMINAL POWER(W)	10	LOR(%)	62.2	S/MH(C90/270)	0.41
RATED VOLTAGE(V)	34	TOTAL FLUX(lm)	957.07	UP,DN(C0-180)	0.0,31.7
NOMINAL FLUX(lm)	1537.95	CIE CLASS	DIRECT	UP,DN(C180-360)	0.0,30.6
LAMPS INSIDE	1	up(%)	0.0	CIBSE SHR NOM	0.00
TEST VOLTAGE(V)	34	down(%)	62.2	CIBSE SHR MAX	0.30



C Range: 0 - 360DEG
C Interval: 30.0DEG
Test Speed: HIGH
Temperature:25.3℃
Operators:zoe
Test Date:2024-5-21

Range: 0 - 180DEG
Interval: 1.0DEG
Test System:EVERFINE GO-SPEX500_V1 SYSTEM V2.00.461
Humidity:65.0%
Test Distance:3.160m [K=1.0000]
Remarks: LAMP:BXRE-30G10TH-A-83 Ra:90
LENS:PM-1082-WH 15R
NO DRIVER:300mA
30minutes warm-up

ZONAL FLUX DIAGRAM

ZONAL FLUX DIAGRAM:

	C0	C45	C90	C135	C180	C225	C270	C315		zone	total	%lum,lamp
10	2927	2976	2992	2970	2890	2838	2824	2854	0- 10	344.8	344.8	36,22.4
20	628.4	644.7	648.3	635.6	613.8	609.3	610.0	609.3	10- 20	406.0	750.8	78.5,48.8
30	129.0	134.0	135.1	133.4	130.9	129.2	125.6	124.1	20- 30	138.5	889.3	92.9,57.8
40	36.43	36.91	37.55	37.54	36.69	36.27	36.18	35.93	30- 40	44.25	933.6	97.5,60.7
50	11.82	11.71	12.00	12.06	12.01	12.08	11.72	11.60	40- 50	16.28	949.9	99.2,61.8
60	1.976	1.963	1.986	2.023	1.961	2.000	1.994	1.932	50- 60	5.645	955.5	99.8,62.1
70	0.6274	0.6189	0.6353	0.6601	0.6522	0.6561	0.6448	0.6114	60- 70	1.263	956.8	100,62.2
80	0.0887	0.0684	0.0822	0.0746	0.0806	0.0737	0.0856	0.0741	70- 80	0.2604	957.0	100,62.2
90	0	0	0	0	0	0	0	0	80- 90	0.0413	957.1	100,62.2
100	0	0	0	0	0	0	0	0	90-100	0	957.1	100,62.2
110	0	0	0	0	0	0	0	0	100-110	0	957.1	100,62.2
120	0	0	0	0	0	0	0	0	110-120	0	957.1	100,62.2
130	0	0	0	0	0	0	0	0	120-130	0	957.1	100,62.2
140	0	0	0	0	0	0	0	0	130-140	0	957.1	100,62.2
150	0	0	0	0	0	0	0	0	140-150	0	957.1	100,62.2
160	0	0	0	0	0	0	0	0	150-160	0	957.1	100,62.2
170	0	0	0	0	0	0	0	0	160-170	0	957.1	100,62.2
180	0	0	0	0	0	0	0	0	170-180	0	957.1	100,62.2
DEG	LUMINOUS INTENSITY:cd									UNIT:lm		

C Range: 0 - 360DEG
C Interval: 30.0DEG
Test Speed: HIGH
Temperature:25.3℃
Operators:zoe
Test Date:2024-5-21

Range: 0 - 180DEG
Interval: 1.0DEG
Test System:EVERFINE GO-SPEX500_V1 SYSTEM V2.00.461
Humidity:65.0%
Test Distance:3.160m [K=1.0000]
Remarks: LAMP:BXRE-30G10TH-A-83 Ra:90
LENS:PM-1082-WH 15R
NO DRIVER:300mA
30minutes warm-up

LUMINANCE LIMITATION CURVES

Test:U:33.852V I:0.3000A P:10.156W PF:1.0000 Freq:0Hz
Lamp Flux:1537.95x1 lm

NAME: 2318.127-ACOT-70-HE

TYPE:

WEIGHT:

SPEC.: 3000K

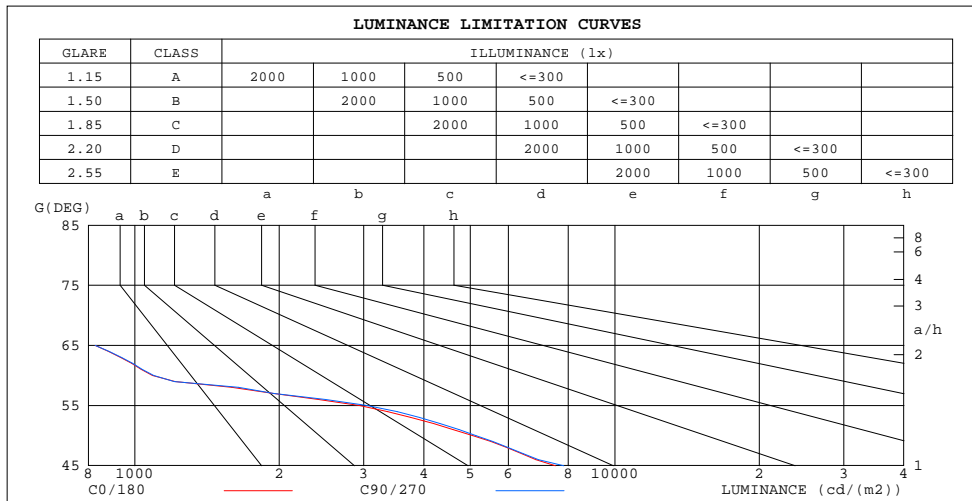
DIM.:

SERIAL No.: 2405210566

MFR.: RISE

SUR.: 0.00362984m2

Shielding Angle:



LUMINANCE cd/(m2)		
G(180)	C0/180	C90/270
85	147	149
80	141	130
75	196	189
70	505	512
65	827	827
60	1089	1094
55	2943	3055
50	5065	5141
45	7525	7823

C Range: 0 - 360DEG
C Interval: 30.0DEG
Test Speed: HIGH
Temperature:25.3℃
Operators:zoe
Test Date:2024-5-21

Range: 0 - 180DEG
Interval: 1.0DEG
Test System:EVERFINE GO-SPEX500_V1 SYSTEM V2.00.461
Humidity:65.0%
Test Distance:3.160m [K=1.0000]
Remarks: LAMP:BXRE-30G10TH-A-83 Ra:90
LENS:PM-1082-WH 15R
NO DRIVER:300mA
30minutes warm-up

CU AND LUMINAIRE BUDGETARY ESTIMATE DIAGRAM

Test:U:33.852V I:0.3000A P:10.156W PF:1.0000 Freq:0Hz
Lamp Flux:1537.95x1 lm

NAME: 2318.127-ACOT-70-HE

TYPE:

WEIGHT:

SPEC.: 3000K

DIM.:

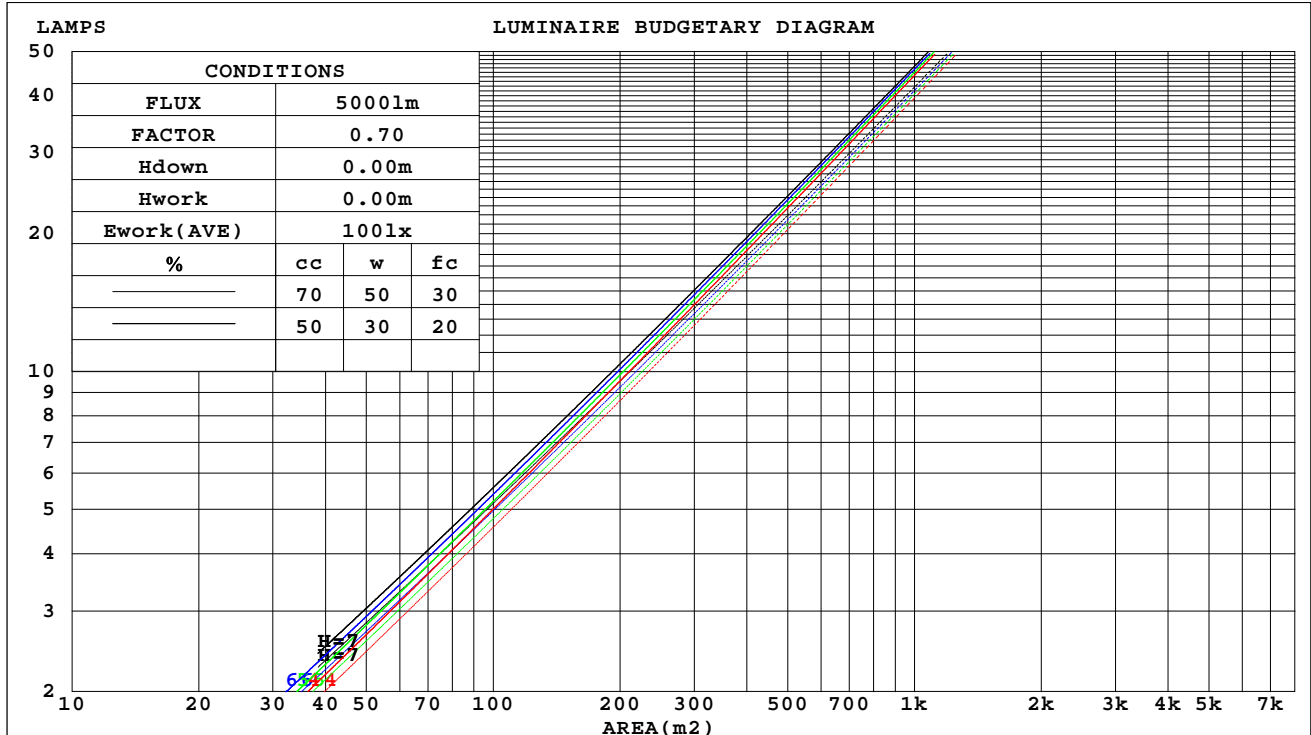
SERIAL No.: 2405210566

MFR.: RISE

SUR.: 0.00362984m2

Shielding Angle:

cc	80%			70%			50%			30%			10%			0
w	50%	30%	10%	50%	30%	10%	50%	30%	10%	50%	30%	10%	50%	30%	10%	0
fc	20%			20%			20%			20%			20%			0
RCR	RCR:Room Cavity Ratio															



C Range: 0 - 360DEG
C Interval: 30.0DEG
Test Speed: HIGH
Temperature:25.3℃
Operators:zoe
Test Date:2024-5-21

Range: 0 - 180DEG
Interval: 1.0DEG
Test System:EVERFINE GO-SPEX500_V1 SYSTEM V2.00.461
Humidity:65.0%
Test Distance:3.160m [K=1.0000]
Remarks: LAMP:BXRE-30G10TH-A-83 Ra:90
LENS:PM-1082-WH 15R
NO DRIVER:300mA
30minutes warm-up

WEC AND CCEC

Test:U:33.852V I:0.3000A P:10.156W PF:1.0000 Freq:0Hz Lamp Flux:1537.95x1 lm		
NAME: 2318.127-ACOT-70-HE	TYPE:	WEIGHT:
SPEC.: 3000K	DIM.:	SERIAL No.: 2405210566
MFR.: RISE	SUR.: 0.00362984m2	Shielding Angle:

cc	80%			70%			50%			30%			10%			0
w	50%	30%	10%	50%	30%	10%	50%	30%	10%	50%	30%	10%	50%	30%	10%	0
fc	20%			20%			20%			20%			20%			0
RCR	RCR:Room Cavity Ratio Wall Exitance Coefficients(WEC)															
0.0																
1.0	.086	.049	.015	.082	.047	.015	.074	.043	.014	.067	.039	.012	.061	.035	.011	
2.0	.080	.044	.013	.077	.042	.013	.070	.039	.012	.064	.036	.011	.059	.033	.011	
3.0	.075	.040	.012	.072	.038	.012	.066	.036	.011	.062	.034	.010	.057	.032	.010	
4.0	.070	.036	.011	.068	.035	.010	.063	.033	.010	.059	.032	.010	.055	.030	.009	
5.0	.066	.034	.010	.064	.033	.010	.060	.031	.009	.057	.030	.009	.053	.028	.009	
6.0	.062	.031	.009	.061	.031	.009	.057	.029	.009	.054	.028	.008	.051	.027	.008	
7.0	.059	.029	.008	.058	.029	.008	.055	.028	.008	.052	.027	.008	.050	.026	.008	
8.0	.056	.028	.008	.055	.027	.008	.053	.026	.008	.050	.025	.007	.048	.025	.007	
9.0	.054	.026	.007	.053	.026	.007	.051	.025	.007	.048	.024	.007	.046	.024	.007	
10.0	.052	.025	.007	.051	.024	.007	.049	.024	.007	.047	.023	.007	.045	.023	.006	

cc	80%			70%			50%			30%			10%			0
w	50%	30%	10%	50%	30%	10%	50%	30%	10%	50%	30%	10%	50%	30%	10%	0
fc	20%			20%			20%			20%			20%			0
RCR	RCR:Room Cavity Ratio Ceiling Cavity Exitance Coefficients(CCEC)															
0.0	.119	.119	.119	.101	.101	.101	.069	.069	.069	.040	.040	.040	.013	.013	.013	
1.0	.105	.098	.092	.090	.084	.079	.061	.058	.055	.035	.034	.032	.011	.011	.010	
2.0	.094	.083	.073	.080	.071	.063	.055	.049	.044	.032	.029	.026	.010	.009	.008	
3.0	.084	.070	.059	.072	.061	.052	.050	.042	.036	.029	.025	.021	.009	.008	.007	
4.0	.077	.061	.049	.066	.053	.043	.045	.037	.030	.026	.021	.018	.008	.007	.006	
5.0	.070	.053	.041	.060	.046	.036	.041	.032	.025	.024	.019	.015	.008	.006	.005	
6.0	.065	.047	.035	.056	.041	.030	.038	.029	.021	.022	.017	.013	.007	.005	.004	
7.0	.060	.042	.029	.052	.036	.026	.036	.026	.018	.021	.015	.011	.007	.005	.004	
8.0	.056	.038	.025	.048	.033	.022	.033	.023	.016	.019	.014	.009	.006	.004	.003	
9.0	.052	.034	.022	.045	.030	.019	.031	.021	.014	.018	.012	.008	.006	.004	.003	
10.0	.049	.031	.019	.043	.027	.017	.029	.019	.012	.017	.011	.007	.006	.004	.002	

C Range: 0 - 360DEG
C Interval: 30.0DEG
Test Speed: HIGH
Temperature:25.3℃
Operators:zoe
Test Date:2024-5-21

Range: 0 - 180DEG
Interval: 1.0DEG
Test System:EVERFINE GO-SPEX500_V1 SYSTEM V2.00.461
Humidity:65.0%
Test Distance:3.160m [K=1.0000]
Remarks: LAMP:BXRE-30G10TH-A-83 Ra:90
LENS:PM-1082-WH 15R
NO DRIVER:300mA
30minutes warm-up

UGR(Unified Glare Rating) Table

Test:U:33.852V I:0.3000A P:10.156W PF:1.0000 Freq:0Hz Lamp Flux:1537.95x1 lm										
NAME: 2318.127-ACOT-70-HE					TYPE:			WEIGHT:		
SPEC.: 3000K					DIM.:			SERIAL No.: 2405210566		
MFR.: RISE					SUR.: 0.00362984m2			Shielding Angle:		
ceiling/cavity	0.7	0.7	0.5	0.5	0.3	0.7	0.7	0.5	0.5	0.3
walls	0.5	0.3	0.5	0.3	0.3	0.5	0.3	0.5	0.3	0.3
working plane	0.2	0.2	0.2	0.2	0.2	0.2	0.2	0.2	0.2	0.2
Room dimensions	Viewed crosswise					Viewed endwise				
x = 2H y = 2H	8.8	9.4	9.0	9.6	9.7	8.9	9.5	9.1	9.7	9.8
3H	8.6	9.3	8.9	9.4	9.6	8.8	9.4	9.0	9.6	9.7
4H	8.6	9.2	8.8	9.4	9.6	8.7	9.3	8.9	9.5	9.7
6H	8.5	9.0	8.8	9.3	9.5	8.6	9.1	8.9	9.4	9.6
8H	8.4	9.0	8.7	9.2	9.5	8.6	9.1	8.8	9.3	9.6
12H	8.4	8.9	8.7	9.2	9.4	8.5	9.0	8.8	9.3	9.5
4H 2H	8.6	9.2	8.8	9.4	9.6	8.7	9.3	9.0	9.5	9.7
3H	8.4	9.0	8.8	9.2	9.5	8.6	9.1	8.9	9.3	9.6
4H	8.4	8.8	8.7	9.1	9.4	8.5	8.9	8.8	9.2	9.5
6H	8.3	8.7	8.6	9.0	9.3	8.4	8.8	8.7	9.1	9.4
8H	8.2	8.6	8.6	8.9	9.3	8.3	8.7	8.7	9.0	9.4
12H	8.1	8.5	8.5	8.9	9.3	8.3	8.6	8.7	9.0	9.4
8H 4H	8.2	8.6	8.6	8.9	9.3	8.3	8.7	8.7	9.0	9.4
6H	8.1	8.4	8.5	8.8	9.2	8.2	8.5	8.6	8.9	9.3
8H	8.0	8.3	8.5	8.7	9.2	8.1	8.4	8.6	8.8	9.3
12H	8.0	8.2	8.4	8.7	9.1	8.1	8.3	8.5	8.8	9.2
12H 4H	8.1	8.5	8.5	8.9	9.3	8.3	8.6	8.7	9.0	9.4
6H	8.0	8.3	8.5	8.7	9.2	8.1	8.4	8.6	8.8	9.3
8H	8.0	8.2	8.4	8.7	9.1	8.1	8.3	8.5	8.8	9.2
Variations with the observer position at spacings(CIE Pub.117):										
S = 1.0H	+ 2.8 / - 7.7					+ 2.9 / - 7.8				
1.5H	+ 4.0 / - 4.4					+ 4.1 / - 4.4				
2.0H	+ 4.7 / - 7.4					+ 4.8 / - 7.6				

CIE Pub.117, 1538 lm Total Lamp Luminous Flux Correct (8log(F/F0) = 1.5)
Area: 0.00362984 m2

C Range: 0 - 360DEG
C Interval: 30.0DEG
Test Speed: HIGH
Temperature:25.3℃
Operators:zoe
Test Date:2024-5-21

Range: 0 - 180DEG
Interval: 1.0DEG
Test System:EVERFINE GO-SPEX500_V1 SYSTEM V2.00.461
Humidity:65.0%
Test Distance:3.160m [K=1.0000]
Remarks: LAMP:BXRE-30G10TH-A-83 Ra:90
LENS:PM-1082-WH 15R
NO DRIVER:300mA
30minutes warm-up

UTILIZATION FACTORS TABLE

Test:U:33.852V I:0.3000A P:10.156W PF:1.0000 Freq:0Hz Lamp Flux:1537.95x1 lm		
NAME: 2318.127-ACOT-70-HE	TYPE:	WEIGHT:
SPEC.: 3000K	DIM.:	SERIAL No.: 2405210566
MFR.: RISE	SUR.: 0.00362984m2	Shielding Angle:

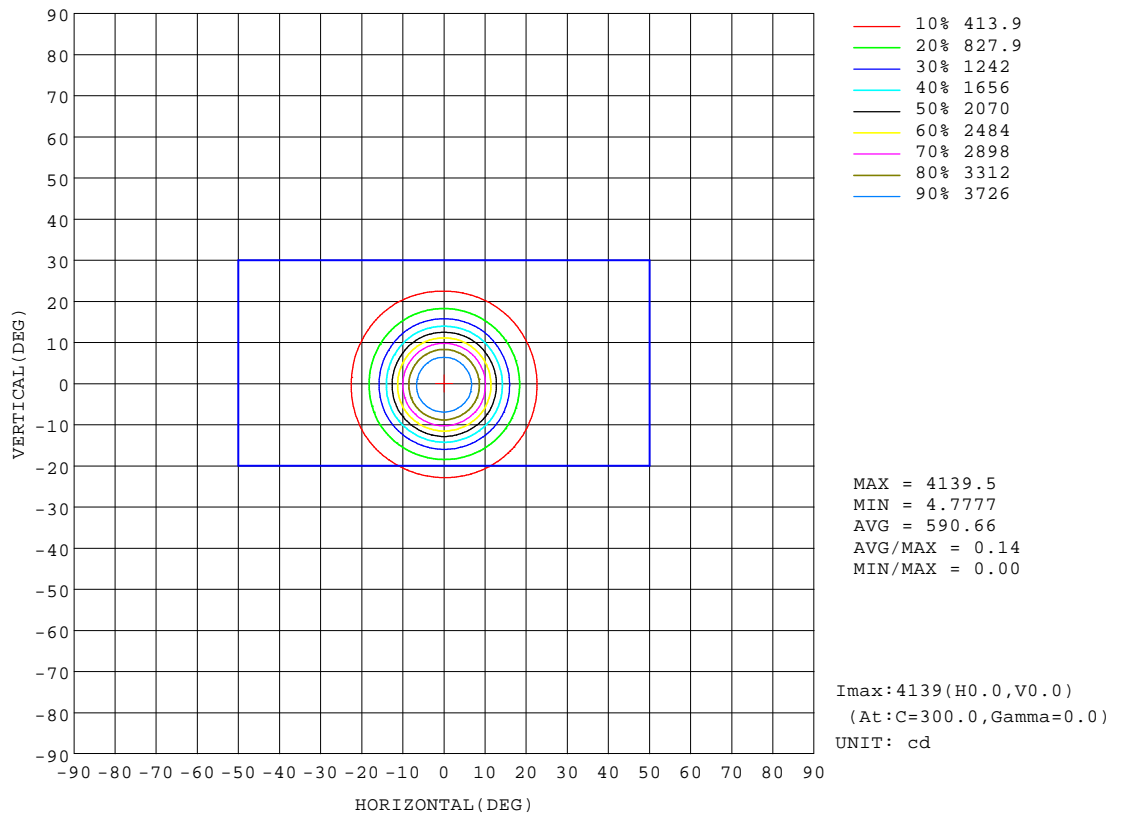
REFLECTANCE										
Ceiling	0.8	0.8	0.8	0.7	0.7	0.7	0.5	0.5	0.5	0
Walls	0.7	0.5	0.3	0.7	0.5	0.3	0.7	0.5	0.3	0
Working plane	0.2	0.2	0.2	0.2	0.2	0.2	0.2	0.2	0.2	0
ROOM INDEX	UTILIZATION FACTORS(PERCENT) $k(RI) \times RCR = 5$									
k = 0.60	56	52	50	56	52	50	55	52	50	48
0.80	60	57	55	60	57	55	59	57	55	53
1.00	63	60	58	62	59	57	61	59	57	55
1.25	65	62	60	65	62	60	63	61	59	57
1.50	67	64	62	66	64	62	65	63	61	59
2.00	68	66	64	67	65	63	66	64	63	59
2.50	69	67	65	68	66	65	66	65	63	60
3.00	70	68	66	69	67	66	67	66	64	61
4.00	71	70	68	70	69	67	68	67	66	61
5.00	72	71	70	71	69	69	68	67	67	62
ROOM INDEX	UF(total)									Direct
According to DIN EN 13032-2 2004			Suspended					SHRNOM = 1.25		

C Range: 0 - 360DEG
C Interval: 30.0DEG
Test Speed: HIGH
Temperature:25.3℃
Operators:zoe
Test Date:2024-5-21

Range: 0 - 180DEG
Interval: 1.0DEG
Test System:EVERFINE GO-SPEX500_V1 SYSTEM V2.00.461
Humidity:65.0%
Test Distance:3.160m [K=1.0000]
Remarks: LAMP:BXRE-30G10TH-A-83 Ra:90
LENS:PM-1082-WH 15R
NO DRIVER:300mA
30minutes warm-up

ISOCANDELA DIAGRAM

Test:U:33.852V I:0.3000A P:10.156W PF:1.0000 Freq:0Hz Lamp Flux:1537.95x1 lm		
NAME: 2318.127-ACOT-70-HE	TYPE:	WEIGHT:
SPEC.: 3000K	DIM.:	SERIAL No.: 2405210566
MFR.: RISE	SUR.: 0.00362984m2	Shielding Angle:

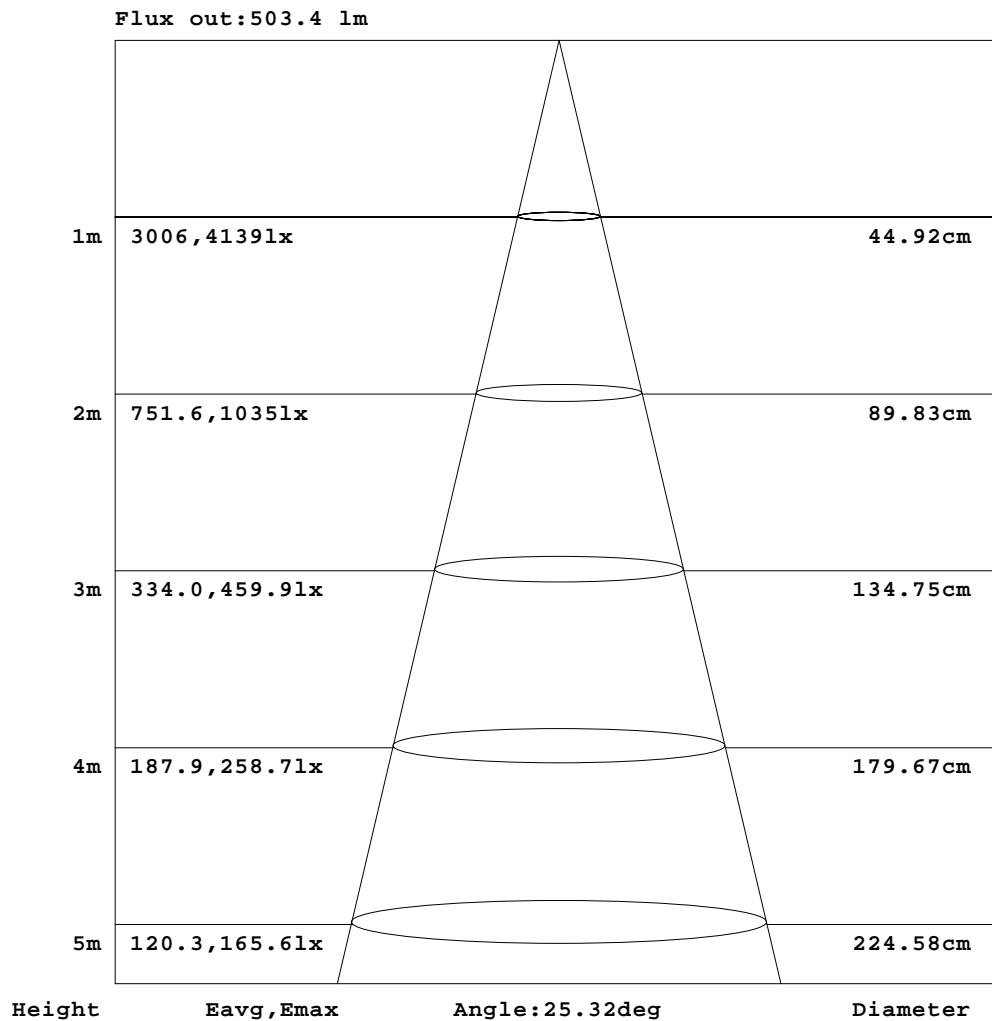


C Range: 0 - 360DEG
C Interval: 30.0DEG
Test Speed: HIGH
Temperature:25.3℃
Operators:zoe
Test Date:2024-5-21

Range: 0 - 180DEG
Interval: 1.0DEG
Test System:EVERFINE GO-SPEX500_V1 SYSTEM V2.00.461
Humidity:65.0%
Test Distance:3.160m [K=1.0000]
Remarks: LAMP:BXRE-30G10TH-A-83 Ra:90
LENS:PM-1082-WH 15R
NO DRIVER:300mA
30minutes warm-up

AAI Figure

Test:U:33.852V I:0.3000A P:10.156W PF:1.0000 Freq:0Hz Lamp Flux:1537.95x1 lm		
NAME: 2318.127-ACOT-70-HE	TYPE:	WEIGHT:
SPEC.: 3000K	DIM.:	SERIAL No.: 2405210566
MFR.: RISE	SUR.: 0.00362984m2	Shielding Angle:



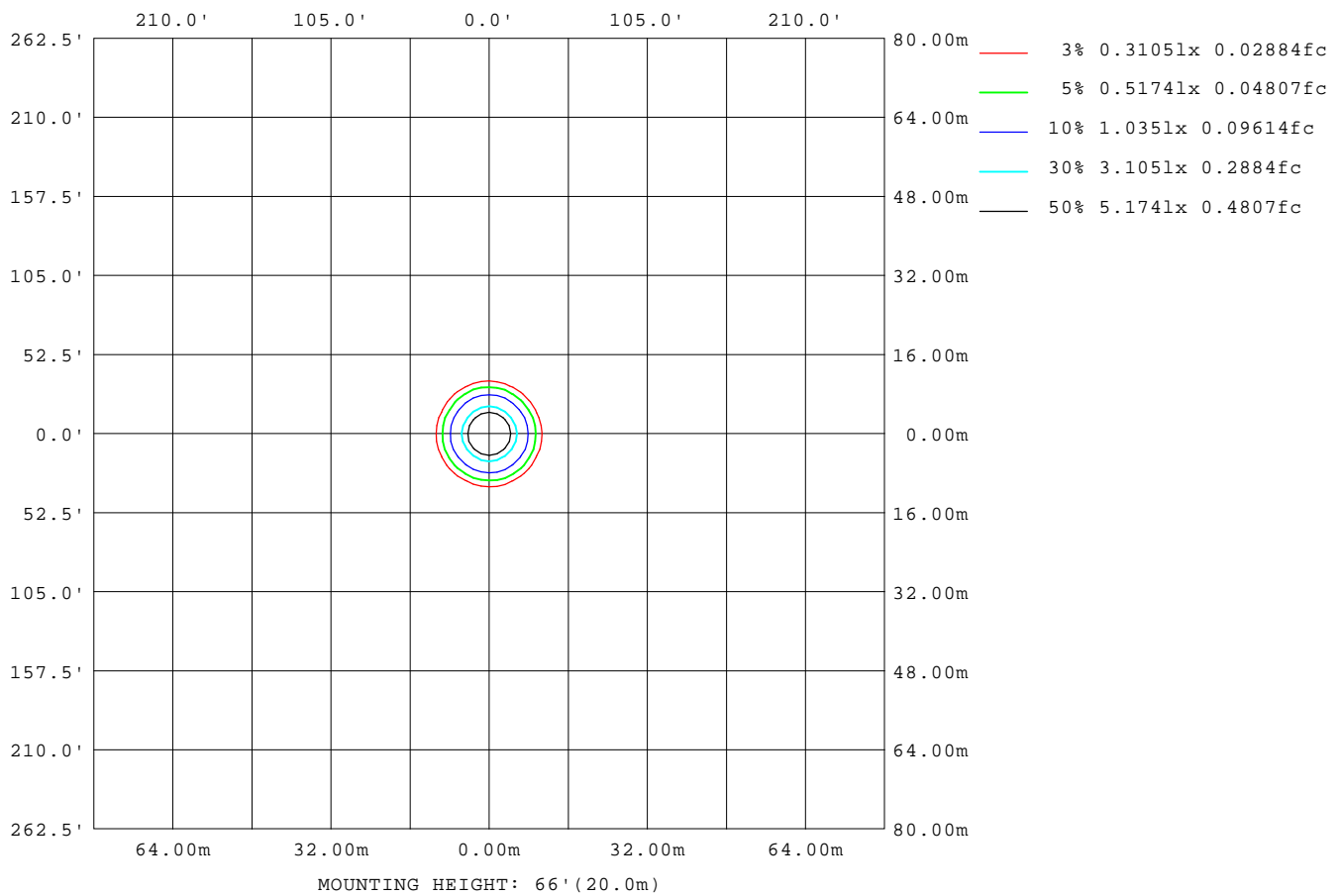
Note:The Curves indicate the illuminated area and the average illumination when the luminaire is at different distance.

C Range: 0 - 360DEG
C Interval: 30.0DEG
Test Speed: HIGH
Temperature:25.3℃
Operators:zoe
Test Date:2024-5-21

Range: 0 - 180DEG
Interval: 1.0DEG
Test System:EVERFINE GO-SPEX500_V1 SYSTEM V2.00.461
Humidity:65.0%
Test Distance:3.160m [K=1.0000]
Remarks: LAMP:BXRE-30G10TH-A-83 Ra:90
LENS:PM-1082-WH 15R
NO DRIVER:300mA
30minutes warm-up

ISOLUX DIAGRAM

Test:U:33.852V I:0.3000A P:10.156W PF:1.0000 Freq:0Hz Lamp Flux:1537.95x1 lm		
NAME: 2318.127-ACOT-70-HE	TYPE:	WEIGHT:
SPEC.: 3000K	DIM.:	SERIAL No.: 2405210566
MFR.: RISE	SUR.: 0.00362984m2	Shielding Angle:



C Range: 0 - 360DEG
C Interval: 30.0DEG
Test Speed: HIGH
Temperature:25.3℃
Operators:zoe
Test Date:2024-5-21

Range: 0 - 180DEG
Interval: 1.0DEG
Test System:EVERFINE GO-SPEX500_V1 SYSTEM V2.00.461
Humidity:65.0%
Test Distance:3.160m [K=1.0000]
Remarks: LAMP:BXRE-30G10TH-A-83 Ra:90
LENS:PM-1082-WH 15R
NO DRIVER:300mA
30minutes warm-up

LED Avg.L Report

Test:U:33.852V I:0.3000A P:10.156W PF:1.0000 Freq:0Hz Lamp Flux:1537.95x1 lm		
NAME: 2318.127-ACOT-70-HE	TYPE:	WEIGHT:
SPEC.: 3000K	DIM.:	SERIAL No.: 2405210566
MFR.: RISE	SUR.: 0.00362984m2	Shielding Angle:

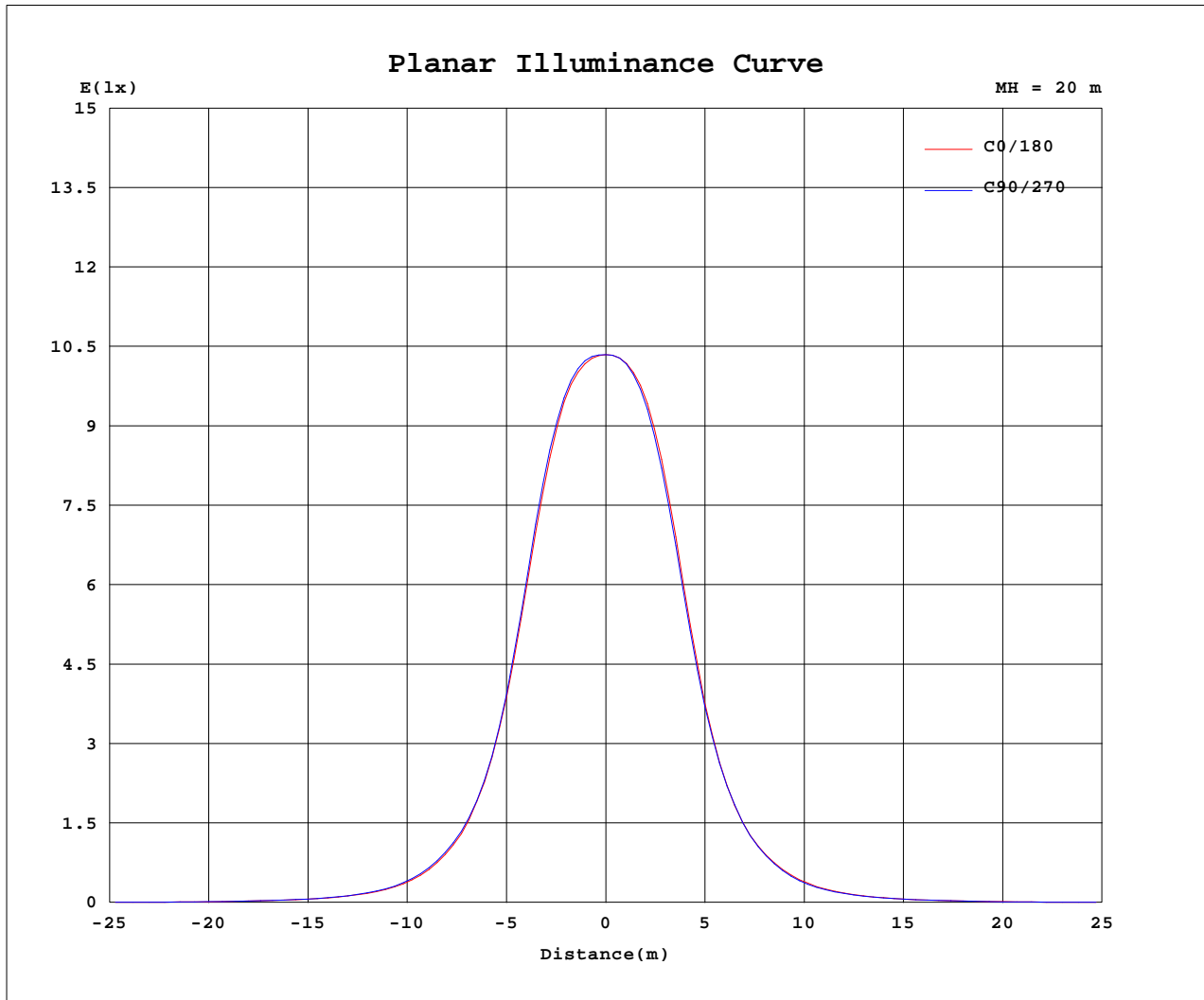
AvgL	cd/m2
L_0~180(65)av	828
L_0~180(75)av	198
L_0~180(85)av	145
L_90~270(65)av	831
L_90~270(75)av	197
L_90~270(85)av	147
L_45(65)av	830
L_45(75)av	188
L_45(85)av	96

Standard: GB/T 29293-2012

C Range: 0 - 360DEG
C Interval: 30.0DEG
Test Speed: HIGH
Temperature:25.3℃
Operators:zoe
Test Date:2024-5-21

Range: 0 - 180DEG
Interval: 1.0DEG
Test System:EVERFINE GO-SPEX500_V1 SYSTEM V2.00.461
Humidity:65.0%
Test Distance:3.160m [K=1.0000]
Remarks: LAMP:BXRE-30G10TH-A-83 Ra:90
LENS:PM-1082-WH 15R
NO DRIVER:300mA
30minutes warm-up

Planar Illuminance Curve



C Range: 0 - 360DEG
 C Interval: 30.0DEG
 Test Speed: HIGH
 Temperature: 25.3 °C
 Operators: zoe
 Test Date: 2024-5-21

Range: 0 - 180DEG
 Interval: 1.0DEG
 Test System: EVERFINE GO-SPEX500_V1 SYSTEM V2.00.461
 Humidity: 65.0%
 Test Distance: 3.160m [K=1.0000]
 Remarks: LAMP: BXRE-30G10TH-A-83 Ra: 90
 LENS: PM-1082-WH 15R
 NO DRIVER: 300mA
 30minutes warm-up



LUMINOUS DISTRIBUTION INTENSITY DATA

Test:U:33.852V I:0.3000A P:10.156W PF:1.0000 Freq:0Hz Lamp Flux:1537.95x1 lm		
NAME: 2318.127-ACOT-70-HE	TYPE:	WEIGHT:
SPEC.: 3000K	DIM.:	SERIAL No.: 2405210566
MFR.: RISE	SUR.: 0.00362984m2	Shielding Angle:

Table--1

UNIT: cd

C(DEG) (DEG)	0	30	60	90	120	150	180	210	240	270	300	330						
0	4139	4139	4139	4139	4139	4139	4139	4139	4139	4139	4139	4139						
5	3960	3980	3987	3990	3986	3979	3953	3934	3929	3923	3929	3938						
10	2927	2976	2976	2992	2978	2963	2890	2843	2834	2824	2839	2868						
15	1456	1494	1469	1471	1445	1450	1409	1378	1400	1393	1413	1414						
20	628	643	646	648	632	639	614	601	617	610	610	609						
25	279	288	295	294	287	292	281	274	281	270	268	269						
30	129	133	135	135	132	135	131	128	130	126	124	125						
35	66.3	67.8	68.7	68.4	67.1	69.0	66.9	65.6	66.5	65.2	64.2	65.2						
40	36.4	36.9	36.9	37.6	37.1	38.0	36.7	36.1	36.5	36.2	35.7	36.1						
45	19.3	19.4	19.4	20.1	20.0	20.3	19.9	19.2	20.1	19.4	19.3	19.1						
50	11.8	11.6	11.8	12.0	11.9	12.2	12.0	12.0	12.2	11.7	11.4	11.8						
55	6.13	6.45	6.48	6.36	6.09	6.73	6.65	6.51	6.50	6.52	6.18	6.29						
60	1.98	1.98	1.95	1.99	2.02	2.02	1.96	1.98	2.02	1.99	1.94	1.93						
65	1.27	1.27	1.25	1.27	1.30	1.31	1.27	1.28	1.30	1.28	1.25	1.23						
70	0.63	0.62	0.61	0.64	0.65	0.67	0.65	0.65	0.66	0.64	0.62	0.60						
75	0.18	0.16	0.17	0.18	0.18	0.19	0.19	0.18	0.19	0.19	0.18	0.17						
80	0.09	0.06	0.08	0.08	0.07	0.07	0.08	0.07	0.07	0.09	0.07	0.08						
85	0.05	0.02	0.03	0.05	0.03	0.03	0.05	0.03	0.04	0.05	0.03	0.03						
90	0.00	0.00	0.00	0.00	0.00	0.00	0.00	0.00	0.00	0.00	0.00	0.00						
95	0.00	0.00	0.00	0.00	0.00	0.00	0.00	0.00	0.00	0.00	0.00	0.00						
100	0.00	0.00	0.00	0.00	0.00	0.00	0.00	0.00	0.00	0.00	0.00	0.00						
105	0.00	0.00	0.00	0.00	0.00	0.00	0.00	0.00	0.00	0.00	0.00	0.00						
110	0.00	0.00	0.00	0.00	0.00	0.00	0.00	0.00	0.00	0.00	0.00	0.00						
115	0.00	0.00	0.00	0.00	0.00	0.00	0.00	0.00	0.00	0.00	0.00	0.00						
120	0.00	0.00	0.00	0.00	0.00	0.00	0.00	0.00	0.00	0.00	0.00	0.00						
125	0.00	0.00	0.00	0.00	0.00	0.00	0.00	0.00	0.00	0.00	0.00	0.00						
130	0.00	0.00	0.00	0.00	0.00	0.00	0.00	0.00	0.00	0.00	0.00	0.00						
135	0.00	0.00	0.00	0.00	0.00	0.00	0.00	0.00	0.00	0.00	0.00	0.00						
140	0.00	0.00	0.00	0.00	0.00	0.00	0.00	0.00	0.00	0.00	0.00	0.00						
145	0.00	0.00	0.00	0.00	0.00	0.00	0.00	0.00	0.00	0.00	0.00	0.00						
150	0.00	0.00	0.00	0.00	0.00	0.00	0.00	0.00	0.00	0.00	0.00	0.00						
155	0.00	0.00	0.00	0.00	0.00	0.00	0.00	0.00	0.00	0.00	0.00	0.00						
160	0.00	0.00	0.00	0.00	0.00	0.00	0.00	0.00	0.00	0.00	0.00	0.00						
165	0.00	0.00	0.00	0.00	0.00	0.00	0.00	0.00	0.00	0.00	0.00	0.00						
170	0.00	0.00	0.00	0.00	0.00	0.00	0.00	0.00	0.00	0.00	0.00	0.00						
175	0.00	0.00	0.00	0.00	0.00	0.00	0.00	0.00	0.00	0.00	0.00	0.00						
180	0.00	0.00	0.00	0.00	0.00	0.00	0.00	0.00	0.00	0.00	0.00	0.00						

C Range: 0 - 360DEG
C Interval: 30.0DEG
Test Speed: HIGH
Temperature:25.3℃
Operators:zoe
Test Date:2024-5-21

Range: 0 - 180DEG
Interval: 1.0DEG
Test System:EVERFINE GO-SPEX500_V1 SYSTEM V2.00.461
Humidity:65.0%
Test Distance:3.160m [K=1.0000]
Remarks: LAMP:BXRE-30G10TH-A-83 Ra:90
LENS:PM-1082-WH 15R
NO DRIVER:300mA
30minutes warm-up